

SeaLife®

Cameras, lighting, and accessories



SeaLife®



Micro 3.0, Sea Dragon 3000F



SportDiver & iPhone 14 Pro Max, Sea Dragon 5000+



SportDiver & iPhone 14 Pro Max, Sea Dragon 2000F



Micro 3.0 Pro 5000 Set



SportDiver ULTRA Pro 2500 Set



SportDiver ULTRA Smartphone Housing

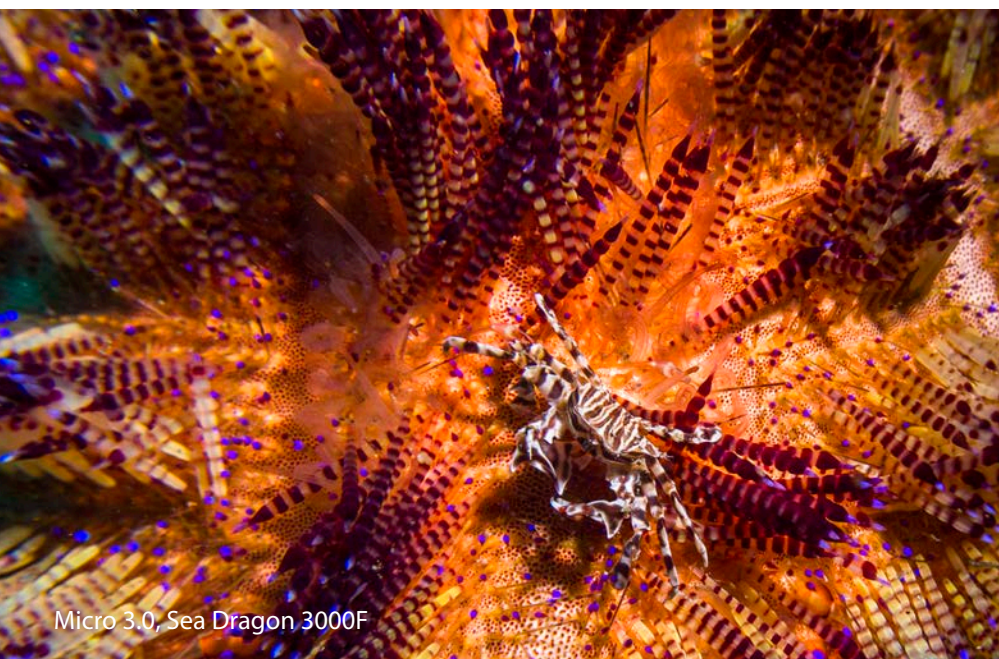


For over 30 years, **SeaLife** has captured incredible memories of your undersea encounters with our award-winning cameras, housings, **Sea Dragon** lighting and **Flex-Connect** accessories.

Where will your next underwater adventure take you?

SeaLife®

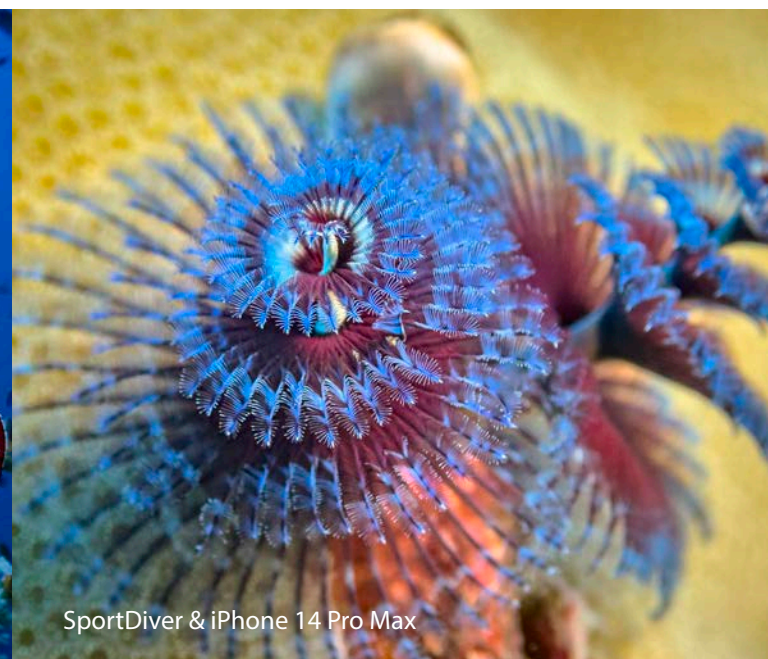
 **SEADRAGON® flex-connect®**



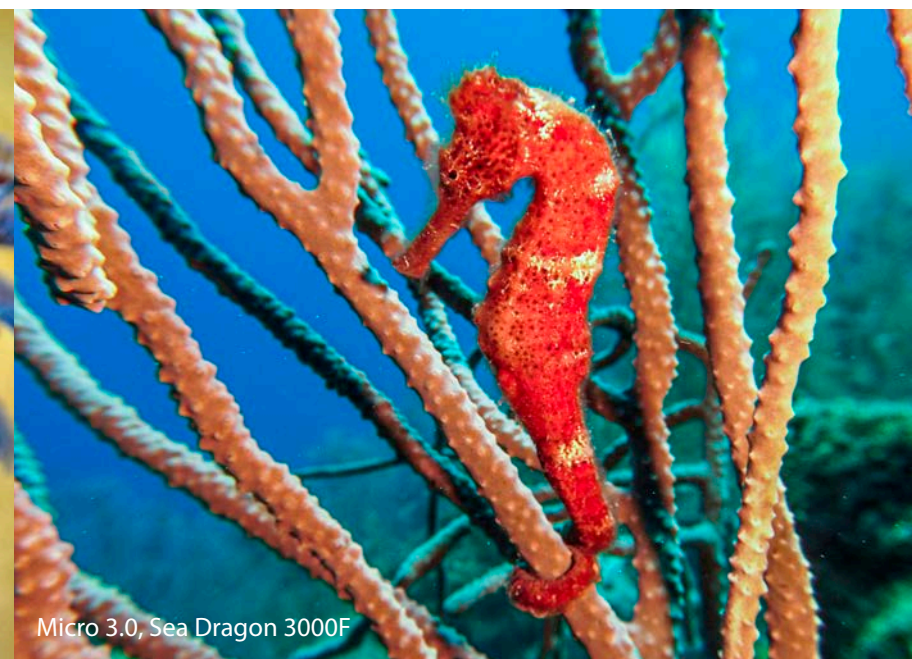
Micro 3.0, Sea Dragon 3000F



SportDiver & iPhone 14, Sea Dragon 6000F



SportDiver & iPhone 14 Pro Max



Micro 3.0, Sea Dragon 3000F

SportDiver®



Capture it with your phone!

For iPhone® & Android™ Phones

Compatibility Checker

Check if your phone fits here

The SeaLife SportDiver® Ultra underwater smartphone housing can encase most Android™ models and all iPhones®, from iPhone 8 & up. The free SportDiver® app, available at the App Store or Play Store, captures photos and video directly to your phone's camera roll, and works with the current and prior generation of the OS. The app also allows you to control advanced camera settings, like zoom, lens selection, video resolution, exposure, manual focus, white balance, RAW+JPEG mode, video stabilization and more, just as if you were using a more sophisticated underwater camera*. The SportDiver® Ultra offers fast and easy playback, and the clear back of the housing has a full unobstructed view of your phone's display screen.



Includes removable underwater color-correction filter

Dual leak alarms continuously monitor waterproof seal

SportDiver® Ultra Underwater Smartphone Housing

Item SL405

The SportDiver® Ultra offers unique visual and audible protection features for your phone, including a vacuum pressure leak avoidance system that checks the waterproof seal integrity before your dive and a moisture sensor that alerts you in the unlikely event a leak is detected. We've produced over 20 generations of underwater cameras and housings, and SeaLife brings a wealth of experience with the design and performance of the SportDiver Ultra.

TECHNICAL FEATURES

Works with iPhone®, most Samsung Galaxy® & other Android™ Phones

iPhone: iPhone 8 & up

Android: Most Android phones, see online compatibility chart

Easy control – Large shutter lever and rear control buttons for easy operation, even with dive gloves

Access popular camera settings – Get creative with your shot by using advanced settings

New Horizontal Lens Port – Allows access to more lenses

Shoot photos or record video – Easily switch between modes

Dual Leak Avoidance system – Includes internal moisture alarm and internal vacuum pressure alarm

Includes removable underwater color-correction filter for bright, colorful underwater photos & videos (other filter colors available)

Includes SeaLife SportDiver® camera app – Free download at App Store and Play Store

Bluetooth® wireless technology – Housing automatically connects to your smartphone

Holding spring and rubber grip tabs securely hold phone in place and adds shock-protection

Seven 1/4-20 tripod mounts – Mounts to Flex-Connect® or any tray with standard tripod threads

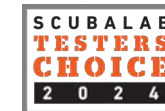
Cam-lock sealing mechanism easily and securely locks waterproof door

Powered by two AAA batteries – over 50 hours of continuous use

Anti-fog design when SL911 Moisture Muncher capsule is used

Depth rated to 130ft / 40m – Each housing is individually depth tested

Playback photos and videos – App Playback mode shows full size photos & videos with vertical thumbnail strip to easily locate your shots



SeaLife SportDiver® app with auto & manual controls

Seven 1/4-20 tripod mounts to mount to Flex-Connect® or any tray with standard tripod threads



SportDiver®

Housing & Light Set

SportDiver® Ultra Pro 2500 Set

Item SL406

The SeaLife SportDiver® Ultra Pro 2500 Set is a compact and lightweight underwater housing and light set for smartphones, for use down to 130 feet or 40 meters. The SportDiver® Ultra Pro 2500 Set includes the Sea Dragon® 2500F Photo-Video Light for brilliant and colorful underwater images and video, and is accompanied with a grip and tray for easy handling and steady imaging.

Includes: SportDiver® Ultra Housing, Sea Dragon® 2500F light, Flex-Connect® Single Tray, Flex-Connect® Grip, EVA case for Housing and Light.



*Available Camera settings depend on available features on your phone. Please download free app from app store to check what settings are available for your specific model.



micro3.0™ Underwater Camera



2.4" LCD display and "Piano Key" controls for easy underwater use

TECHNICAL FEATURES

- Permanently sealed:** no O-rings to maintain
- 16 megapixel SONY® image sensor** for sharp colorful images
- 4K Ultra HD Video @ 30fps** and **1080p HD video @ 120fps**
- Focus from 15in / 40cm to infinity**
- 260K hi-res 2.4" TFT color LCD**
- Internal 2000mAh Li-ion Battery:** 3+ hours of use
- Five Land & Sea™ scene modes** with color correction
- Wireless downloading** with SeaLife Micro 3.0+ App
- Three built-in underwater color correction filters**
- 100° Ultra-Wide Angle Lens** fits everything in the shot
- RAW/JPEG image format:** JPEG & DNG still image files
- Burst Shooting Mode:** 10 16MP photos per second
- Manual White Balance** to customize color correction
- 64GB internal memory:** thousands of photos, hours of video
- Easy Setup Mode** with on-screen guide and easy menus
- Waterproof to 200ft / 60m**
- Compact design** for easy handling and lightweight travel
- Expandable** with popular SeaLife® accessories
- Rubber Armored:** impact & shock resistant body

The Micro 3.0 is **compact, lightweight and comfortable to handle** in the water with its slightly negative buoyancy.



WiFi to wirelessly view, download and share pictures and videos to smart device using the **SeaLife Micro 3+ app**.

micro3.0™ Camera & Light Sets



Micro 3.0 Pro 3000 Color Boost Set

Item SL555

Easy control for colorful and sharp stills and videos, the Micro 3.0 Sea Dragon® Pro 3000 Color Boost Set. includes the fully adjustable Sea Dragon 3000F Color Boost Photo-Video Light, Micro 3.0 Camera, Flex-Connect® Single Tray, and Grip for stability and handling. The Sea Dragon® 3000F Color Boost Light features easy dial-in brightness adjustment and two distinct color temperatures, 5000k (Kelvin) and 3900k Color Boost, adding vivid colors to underwater photos and videos. Also available: Item SL554 Micro 3.0 Pro Dual Beam Set (upper photo).

Micro 3.0 Pro Duo 5000 Set

Item SL553

The Micro 3.0 Pro Duo 5000 Set combines two sun-like Sea Dragon® 2500F Lights with the Micro 3.0 camera to create the a versatile package for the underwater photographer. The set packs an astonishing 5000 lumens, capturing rich and natural color in underwater photos and videos while the ergonomic Flex-Connect® Dual Tray, Grips, and Flex Arms provide stability and easy handling. Dual lighting also minimizes shadows in your photos and videos.

micro3.0™



Item SL550

Experience the undersea world with the permanently sealed, flood-proof SeaLife Micro 3.0 underwater camera.

The easy-to-use Micro 3.0 is ready to dive right out of the box. No O-rings to maintain, and no need to worry about leaks. Just charge it and go! The brilliant performance of the Micro 3.0 comes from the 16 megapixel SONY® CMOS sensor that captures amazing color and detail.

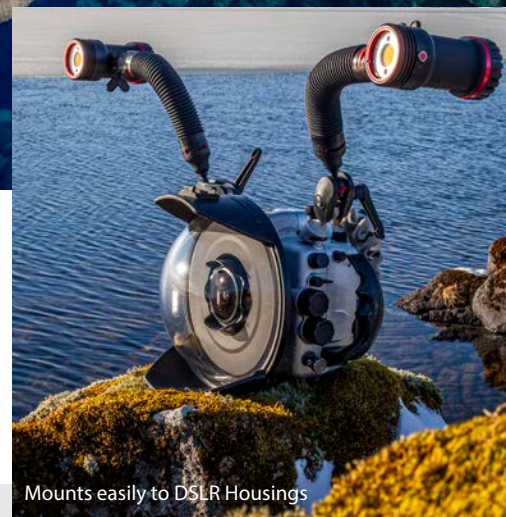
Small and ergonomic, the Micro 3.0 camera is easy to handle underwater, operating with three wide "Piano Key" controls. An Easy Setup Guide provides a fast and intuitive way to select a color correction mode for your diving environment, allowing you more time diving and less time scrolling through menus.



SEADRAGON® Photo/Video Lights

With SeaLife's Sea Dragon® lights, you'll get the **brightness, color rendering & temperature**, and **beam angle** to produce magazine quality stills and brilliant underwater video.

Sea Dragon® 5000+ with Color Boost™



Mounts easily to DSLR Housings



Tobias Friedrich started taking underwater photos in 2007. Since then his images have been published in prestigious scuba diving magazines such as Sport Diver, Unterwasser, Tauchen, Scuba Diver, Through The Lens and many others.



Using two powerful photo/video lights with your camera will ensure complete light coverage of your underwater image. Shown: Micro 3.0 camera with Sea Dragon Duo 6000 Color Boost Light Set.



Sea Dragon® 5000+ Item SL680



Features:

5000-6000 lumen white flood COB LED (90 CRI, color rendering index)

Easy Mode (Default): 5000 lumens > 5000 lumen Color-Boost > 3000 lumens > 1500 lumens > Red 220 lumens

Advanced Mode: 5000 lumens > 5000 lumen Color-Boost > 6000 lumens (returns to 5000 lumens after 2 minutes) > 6000 lumen Color Boost (returns to 5000 lumens Color Boost after 2 minutes) > 3000 lumens > 3000 lumen Color Boost > 1500 lumens > Red 220 Lumens

SOS and Emergency Blinking Mode (White Light)

120° beam angle above water (90° underwater)

Depth rated to 330ft / 100m

The Sea Dragon® 5000+ includes: YS Mount, Flex-Connect® YS Adapter, 1" ball joint adapter, 50Wh 3400mAh 7.4v Li-ion rechargeable battery, AC Power Adapter & Charging tray, International plug adapters (US/EU/UK/AU), Spare O-rings ,O-ring lubricant, O-ring removal tool, and Protective Neoprene Sleeve.

The Sea Dragon 5000+

photo-video light features 5000 lumens in a smooth, consistent 120° wide beam. A photo and video friendly 90 CRI (color rendering index) COB LED array simulates natural sunlight allowing the user to capture vibrant colors and sharp details in underwater photos and videos that otherwise would be left unseen.

The 5000+ light's **new patent-pending SeaLife Color-Boost™** mode combines specific red and white light frequencies producing a warm and vibrant underwater color effect . Red is the first color in the visible light spectrum filtered out by water. Color-Boost™ replenishes the lost red colors and offers a variety of color tuned settings for varying conditions.

The easy, one-button operation powers on the light, adjusts brightness and activates the Color-Boost mode. The light powers on at 5000 lumens of white light at a 5000K color temperature. Pushing the mode button once adds Color Boost and warms the color temperature to 3700K. The light's two red LEDs allow visibility while conserving power during night dives.

The Sea Dragon® 5000+ also features an **"Advanced Mode"** with more brightness settings including more Color-Boost options and a 2-minute 6000 lumen brightness setting. The light's default setting is **"Easy Mode"**.



Pro Tip: Best Foreground Subjects with Interesting Backgrounds

By Tobias Friedrich. Fiji.
Great underwater images start with capable underwater photo-video lights to illuminate the foreground and also an interesting background. When you're looking for subjects to photograph, try to find a coral reef as a background setting, and add a foreground subject such as your dive buddy or these Anthias.

Equipment: SeaLife® Micro 3.0, Deep Water White Balance, Sea Dragon® 3000F.



Sea Dragon® 3000F Color Boost

Item SL681

The Sea Dragon® 3000 Color Boost's new LED array delivers 3000 lumens in a smooth 120° wide beam and offers a 90 CRI (color rendering index) that replicates natural sunlight.

With the new Sealife Color Boost™ mode, the light adds vivid colors to underwater photos and video. The Sea Dragon® 3000 powers on at 3000 lumens of white light at 5000k (Kelvin) color temperature. When the Sealife Color Boost™ is activated, the color temperature warms to 3900k (3300 lumens peak brightness), replenishing lost colors for a balanced and colorful effect.

Another feature is the light's large, knurled dial that allows the user to quickly power on the light and smoothly adjust brightness from 300 to 3000 lumens without steps or sudden changes in light intensity. A push on the dial switches the light from white-only to Color Boost mode.

The light also offers a red-only stealth mode, which uses two red LEDs used for night dives without scaring sea creatures that are sensitive to bright light. Includes Flex-Connect® Single tray & grip, and Sea Dragon® Travel case. Item SL681: Sea Dragon® 3000F Color Boost Light Head only.



SEA DRAGON®
Photo/Video Lights

Sea Dragon® Duo 10K+ Color Boost Set

Item SL695

Combining two Sea Dragon® 5000+ Light heads, the Duo 10K+ Color Boost™ Light Set has more than enough brightness, the performance is enhanced by the brilliant color effect produced by the Color Boost™ feature allowing adjustment over 4 color temperature settings. Includes Ultra Dual Tray, 2x grips, and Sea Dragon® Pro Duo Case.



Sea Dragon® Duo 6000 Color Boost Set

Item SL694

The Duo 6000 Color Boost™ Set combines two matched high-performance 3000 Color Boost™ light heads that exceed 3000 lumens each in a smooth 120° wide beam and offers a 90 CRI (Color Rendering Index) that replicates natural sunlight. Easily adjust brightness with the light's light intensity dial while the Color Boost™ setting adds a warmer 3900k boost in color to underwater photos and video. Includes Ultra Dual Tray, 2x grips, and Sea Dragon® Pro Duo Case.



The Sea Dragon® 2500F uses a flat panel COB LED array that closely mimics natural sunlight.

Lighting, whether by strobe or LED, is the single most important underwater imaging feature next to your camera.

With SeaLife's Sea Dragon® lights, you'll get the brightness, color rendering, temperature, and beam angle to produce amazing magazine quality stills and brilliant underwater video.



Without Photo/Video Light



With Photo/Video Light

PRO TIP: "Artificial lighting is essential to bring out vibrant color and crisp contrast in underwater photos. These colors are lost as we dive deeper, so the flash or light illuminates the colors otherwise lost in a sea of blue. Subjects close to the camera will benefit most."
— Brent Durand, Professional Underwater Photographer



Sea Dragon® 2300F

Item SL682

The new Sea Dragon® 2300F Photo/Video Light offers 2300 true lumens and a smooth, even 120° wide beam angle.

This new COB LED on the 2300 lights offers brightness over 2300 lumens while maintaining a 80 CRI (color rendering index), that matches natural daylight. Dive to uncover colorful reefs and hidden sea creatures with this photo/video light. Includes Flex-Connect® Micro tray and grip.

Item SL682: Sea Dragon® 2300F Light Head



Sea Dragon® 2500F

Item SL671

The Sea Dragon® 2500F uses flat panel COB LED technology to closely mimic natural sunlight, bringing out amazing colors in underwater photos and videos.

With a Color Rendering Index of 90, the Sea Dragon® 2500F solves the issue of dark, blue underwater photos and videos by adding brilliant light down to 330 feet/100 meters.

Item SL671: Sea Dragon® 2500F Light Head

Item SL989: Sea Dragon® Duo (2x2500) 5000F Set



SEADRAGON®

Pro Dual Beam



The Magic of Fluorescence

Shine it on for an amazing display of color!

Sea Dragon® Fluoro-Dual Beam Item SL673

In partnership with Fire Dive Gear, SeaLife developed their Sea Dragon Fluoro-Dual Beam that emits a powerful blue light beam and adds an integrated dichroic filter creating the optimal light wavelength to excite underwater life. The integrated LED driver circuitry allows the light to operate at constant brightness throughout the battery life, so the light will not dim as battery power is reduced.

Switchable beams quickly adjust with the push of a button from blue fluoro 65° flood to white 800 lumen 15° spot, making the Fluoro-Dual Beam a truly versatile dive light. A removable 25Wh lithium ion battery delivers power for a full 60 minutes at full fluoro brightness.

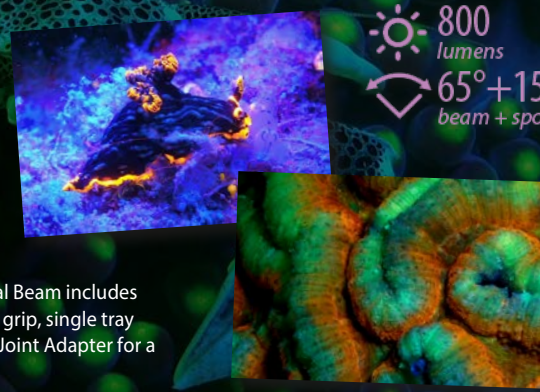
SPECIAL FEATURES

- Six 5W CREE XT-E Royal Blue LEDs and one CREE XP-L white LED
- 26 watt/m² fluoro flood and 800 lumen white spot
- 100% Fluoro Flood, 50% Fluoro Flood, 100% white spot and 50%, white spot brightness modes
- 65° Fluoro flood and 15° white spot beam angles
- 60 minute run time (full power); 170 minute charge time
- Depth rated to 330ft / 100m

The Sea Dragon® Fluoro-Dual Beam also includes two essential yellow barrier filters; one for optimal fluoro-viewing and a universal lens cover for imaging.

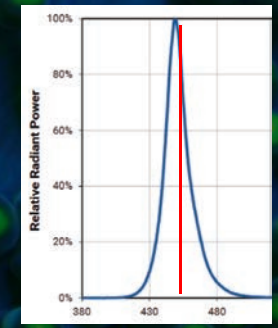


800 lumens
65°+15° beam + spot



The Fluoro-Dual Beam includes a Flex-Connect grip, single tray and SL995 Ball Joint Adapter for a universal fit.

Why use a dichroic filter? The CREE Royal Blue LEDs emit a light wavelength that ranges between 440nm and 465nm, but a tighter 455nm wavelength is needed for an optimal fluoro effect.

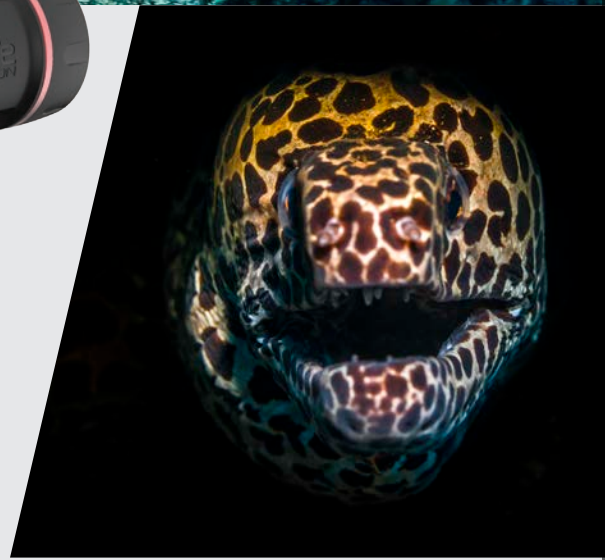


Sea Dragon® Pro Dual Beam Item SL679

Ultimate versatility with a light that works for all imaging and lighting needs underwater!

The Sea Dragon® Pro Dual Beam offers 3000 brilliant, color friendly lumens over a wide 120° beam angle. Quickly switch to a 1500 lumen 15° spot beam for a snoot or spotlight photography effect or reaching longer distances. Brightness and beam angles are easily adjusted with a quick push of a button. The light includes two 180 lumen red 88° LEDs that won't scare away nighttime sea creatures while preserving your eye's natural night vision.

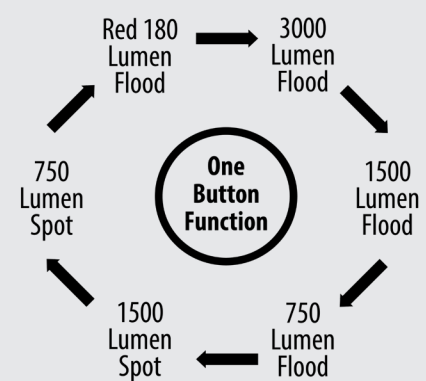
The Sea Dragon® Pro Dual Beam includes a powerful 3400 mAh Li-ion battery for a 60-minute run time at full power. Easy one-button operation. Includes Flex-Connect® grip and tray for mounting to any camera with standard 1/4-20 tripod threads. Easy to expand with Flex-Connect® system of trays, grips and flex arms.



Finally, a true do-it-all underwater photo-video-dive light.

Sea Dragon Pro Dual Beam Features:

- 3000 lumen white flood COB LED (90 CRI, color rendering index)
- 1500 lumen white spot LED (70 CRI)
- 100% Wide, 50% Wide, 25% Wide, 100% Spot, 50% Spot, Red, SOS and Emergency Blinking Mode
- 120° beam angle above water (90° underwater)
- Wide Beam: 60 minute run time (full power); up to 4 hours at 25% power (using 25Wh Li-ion rechargeable battery pack)
- Narrow Beam: 80 minute run time (full power); up to 2.6 hours at 50% power (using 25Wh Li-ion rechargeable battery pack)
- Depth rated to 330ft / 100m



Use the narrow 15° spot beam to create unique lighting effects on your subject.

Two red LEDs emit 180 lumens.

Wide 120° COB flood beam with photo-friendly CRI of 90





Photo, Video & Dive Lights



Photo/Video Lights



Sea Dragon® 2300F
Item SL682



Sea Dragon® 2500F
Item SL671

Light Source	COB LED CREE CMB1825	COB LED Bridgelux Vero 18
Brightness	2300 Lumens	2500 Lumens
Brightness Levels	100%, 50%, 25%	100%, 50%, 25%
Light Modes	Constant or emergency signal	Constant or emergency signal
Color Temperature	5000k	5000k
CRI*	80	90
Beam Angle	120°	120°
Battery	Li-ion 7.4V, 3400 mAh, 25WH (included)	Li-ion 7.4V, 3400 mAh, 25WH (included)
Run Time (@100%)	80 minutes	60 minutes
Depth	330 ft / 100 m	330 ft / 100 m
Head Only Item	SL6821	SL6712
Included Tray/Grip	Micro Tray, Grip, Action camera mount	Single Tray, Grip, Sea Dragon Case, Action camera mount



Sea Dragon® 3000F Color Boost™
Item SL681



Sea Dragon® 5000+ Color Boost™
Item SL680



Sea Dragon® 3000SF Pro Dual Beam
Item SL679

Light Source	1x COB LED Bridgelux Gen 8 Vero 2x CREE XP-E red LEDs	COB LED Bridgelux Gen 8 V18, 2x Luminus SST10-R red LEDs	1x (Wide) COB LED BridgeLux V18 1x (Narrow) COB LED Luminus SST-40-W; 2x Luminus SST-10-R red LED
Brightness	White Light: 3000 Lumens Red Light: 300 Lumens	5000+ Lumens	3000 (Wide), 1500 (Narrow) Lumens
Brightness Levels	300-3300 lumens, Color Boost, Red	1500, 3000, 5000, 6000 Lumens; Color Boost; Red	Wide Angle 100%, 50%, 25%; Spot Beam 100% & 50%, Red
Light Modes	Constant or emergency signal	Constant or emergency signal	Constant or emergency signal
Color Temperature	5000k, 3900k	5000k, 4000k, 3700k, 2700k	5000k
CRI*	90	90	90
Beam Angle	White Light: 120° Red light: 88°	120°	120°
Battery	Li-ion 7.4V, 3400 mAh, 25WH (included)	Li-ion 14.8V, 3400 mAh, 50WH (included)	Li-ion 7.4V, 3400 mAh, 25WH (included)
Run Time (@100%)	60 minutes	60 minutes	60 minutes
Depth	330 ft / 100 m	330 ft / 100 m	330 ft / 100 m
Head Only Item	Item SL6811	SL680	SL6791
Included Tray/Grip	Single Tray, Grip, Sea Dragon Case, Action camera mount	1x Ball Mount, 1x YS Mount, 1x Flex-Connect YS Adapter	Single Tray, Grip, Action camera mount



Sea Dragon® Duo 5000
Item SL989



Sea Dragon Duo 6000® Color Boost™
Item SL694



Sea Dragon Duo 10K+ Color Boost™
Item SL695

Photo/Video Duo Light Sets

Light Source	2x COB LED Bridgelux Vero 18	1xCOB LED Bridgelux Gen 8 Vero, 2x Cree XP-E red LEDs	COB LED Bridgelux Gen 8 V18, 2x Luminus SST10-R red LEDs
Brightness	2x 2500 Lumens	2x3300 Lumens	2x 5000+ Lumens
Brightness Levels	100%, 50%, 25%	Dial 300-3300; Color Boost; Red	1500, 3000, 5000, 6000 Lumens; Color Boost; Red
Light Modes	Constant or emergency signal	Constant or emergency signal	Constant or emergency signal
Color Temperature	5000k	5000k, 3900k	5000k, 4000k, 3700k, 2700k
CRI*	90	90	90
Beam Angle	120° x2	120°	120°
Battery	Li-ion 7.4V, 3400 mAh, 25WH (included)	Li-ion 7.4V, 3400 mAh, 25Wh (included)	Li-ion 14.8V, 3400 mAh, 50Wh (included)
Run Time (@100%)	60 minutes	60 minutes	60 minutes
Depth	330 ft / 100 m	330 ft / 100 m	330 ft / 100 m
Head Only Item	SL6712	SL6811	SL680
Included Tray/Grip	Dual Tray, 2x Grips, Travel Case, Action camera mount	Ultra Dual Tray, 2x Grips, Travel Case, Action camera mount	Ultra Dual Tray, 2x Grips, 2x Ball Mounts, 2x YS Adapters, 2x Neoprene Cover, Travel Case, Action camera mount

Fluoro & Dive Lights



Sea Dragon® Fluoro-Dual Beam
Item SL673



Sea Dragon® Mini 900S Dive Light
Item SLKIT06



Sea Dragon® Mini 1300S Dive Light
Item SLKIT08

Light Source	Cree XT-E Royal Blue LED	Cree XM-L2 T6 LED	Luxeon V LED
Brightness	26 watt/m ² Fluoro, 800 Lumens	900 Lumens	1300 Lumens
Brightness Levels	Fluoro 100%, 50%; Spot 100%, 50%	100%, 50%, 25%	100%, 50%, 25%
Light Modes	Constant or emergency signal	Constant or emergency signal	Constant or emergency signal
Color Temperature	5000-7000k (White Spot)	6000-7000k	6000-7000k
CRI*	n/a	70	70
Beam Angle	65° Fluoro, 15° Spot	14°	8°
Battery	Li-ion 7.4V, 3400 mAh, 25Wh (included)	Li-ion 3.7V, 2600 mAh, AC charger (included)	Li-ion 3.7V, 2600 mAh, AC charger (included)
Run Time (@100%)	Fluoro Beam: 60 mins; Narrow Beam: 120 mins	120 mins, 4 hrs @ 50% power, 8 hrs @ 25% power**	55 mins, 1.8 hrs @ 50% power, 3.7 hrs @ 25% power**
Depth	330 ft / 100 m	330 ft / 100 m	330 ft / 100 m
Head Only Item	n/a	SL653	SL654
Included Tray/Grip	Single Tray, Grip, Ball Joint Adapter, Sea Dragon Case, Mask and Camera Barrier filter	n/a	n/a

*CRI = Color Rendering Index

All lights feature a battery over-pressure safety release valve. The beam angles for the Sea Dragon lights are shown as the true, tested "in-air" (above water) beam angle. Due to light refraction, the angle tightens to approximately 33% less underwater. (i.e. 120° = 90° underwater).



Compact/Handheld Lights

Sea Dragon Mini 900S

Item SLKIT06

With the Sea Dragon® Mini 900 Underwater Dive Light, a high intensity long-range beam meets ultra-compact design. The Mini 900 features a 14° spot beam and three easy one-handed access power levels plus emergency one-second and SOS flash. A heavy duty BC lanyard and clip is included. The light runs on two CR123 or a single rechargeable 18650 Li battery.

Includes 18650 2600mAh 3.7V battery, 18650 USB Battery Charger, lanyard with BC clip, spare O-rings and lube.

Item SL653 — Without battery & charger.



Sea Dragon Mini 1300S

Item SLKIT08

The Sea Dragon® Mini 1300S Underwater Dive Light gives you a tight, high intensity long-range beam for maximum distance. The Mini 1300 features a 8° spot beam and three easy one-handed access power levels plus emergency one-second and SOS flash. A heavy duty BC lanyard with clip is included. The light runs on two CR123 or a single rechargeable 18650 Li battery.

Includes 18650 2600mAh 3.7V battery, 18650 USB Battery Charger, lanyard with BC clip, spare O-rings and lube.

Item SL654 — Without battery & charger.



SPECIAL FEATURES

- CREE XM-L2 T6 LED
- 100%, 50%, 25%, one second blink, emergency SOS
- 14° beam angle (10.5° underwater)
- 120 minute run time (full power); up to 8 hours at 25% power (using 3500mAh Li battery)
- Depth rated to 330ft / 100m

SPECIAL FEATURES

- Luxeon V LED
- 100%, 50%, 25%, one second blink, emergency SOS
- 8° beam angle (6° underwater)
- 85 minute run time (full power); up to 5.5 hours at 25% power (using 3500mAh Li battery)
- Depth rated to 330ft / 100m

flex-connect[®]

Mounting Accessories



1-Inch Ball Clamp

Item SL9907

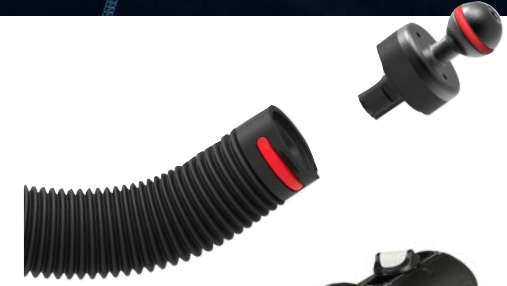
Connects two 1-inch diameter ball mounts together. The plates are spring-loaded for easy assembly and breakdown. Its wing-nut handle features an attractive red anodized finish.



Ball Joint Adapters

Item SL995 Item SL999

Connect Sea Dragon® lights and Flex-Connect® accessories to any underwater camera using a standard 1"/25mm ball joint mounting system, or connect any light with a ball joint mount to Flex-Connect® accessories.



Connects Sea Dragon® Lights to any ball joint system (SL995)



Connects ball joint lights to Flex-Connect® system (SL999)



Flex-Connect® Sea Dragon® Ball Joint Adapter connects Sea Dragon® Lights to 1" ball joint system (SL995)

Ball Joint Adapter for Flex-Connect® mounts ball joint lights to Flex-Connect® system (SL999)



Pre-Built Mounting Kits for turn-key convenience



Dual Tray Kit

Item SLKIT03

Complete with Flex-Connect® Dual Tray, two Grips, two Flex Arms and two YS Adapters, this kit will help you get the most out of your underwater camera. Just add nearly any brand of camera and lights, and you're ready to head into the water. The tray uses a standard ¼-20 tripod mount to fit most major brands of underwater cameras, and the YS adapter and Flex-Connect® mounts attach to a wide array of underwater lighting brands.



Single Tray Kit

Item SLKIT02

This kit includes a Flex-Connect Single® Tray, Grip, Flex Arm and YS Adapter. The tray uses a standard ¼-20 tripod mount to fit most major brands of underwater cameras, and the YS adapter and Flex-Connect® mounts attach to a wide array of underwater lighting brands.



The Ball Arm Extension Kit allows you to support heavier lights on the Flex-Connect® system.

15"/38cm Rigid Ball Arm Extension Kit

Item SLKIT11

When you want a rigid arm system to support heavier lights or in heavy currents This arm kit includes the new SL9909 Flex-Connect® 8" (20cm) 1" Ball arm; one SL995 Sea Dragon Ball adapter; one SL999 Flex-Connect® Ball adapter and two SL9907 1" Ball Clamps.



Turn-key Mini lights include everything you need for your dive



We combine the Mini 900S and 1300S Dive lights with a high performing safety tested XTAR 18650 2600 mAh battery, along with a compact USB Mini Charger. The USB Mini charger works with common 5-watt USB power adapters, or it can be plugged into your computer's USB port for charging.

If the need arises, in case of loss or damage to the 18650 rechargeable battery, you may still use two CR123 single use Li batteries with these lights.

flex-connect®



New Flex-Connect Mounting Accessories

SeaLife® Buoyancy Floatation Rings

Item SL931

When using a heavier negatively buoyant camera and light systems, these durable high-density foam rings attach to Flex-Connect® flex arms and grips adding lift for a neutral, more stable shooting position.

Adding float rings helps keep your SeaLife underwater camera and lighting upright and comfortable to use. Each ring adds 4 ounces (113g) of float in seawater. For example, the SeaLife SportDiver with Dual tray, two grips, two flex-arms and two Sea Dragon® 5000+ Color Boost™ lights has 23 ounces (652g) of negative buoyancy. Adding 4 rings reduces the underwater weight of the camera set to only 7 ounces (200g) of negative buoyancy.

If you want to make the camera set, positively buoyant, just add a few more rings to the arms or grips. Includes 4 float rings in a package.



SeaLife Stainless 1/4-20 Hinged D-Ring

Item SL9981

Easily add a lanyard to any tripod mount with the 1/4-20 hinged D-ring that screws into the standard tripod mount for attaching a lanyard or wrist strap. It's ideal for securing a lanyard to Flex-Connect® Handles, Flex-Connect® Trays, housing, camera or any device with a standard 1/4-20 tripod mount. Made from 316 stainless steel construction.



SeaLife® Buoyancy Weights

Item SL934

With positively buoyant cameras, lenses and light systems, you may want to add some weight to stabilize and allow the camera to be easily turned and directed towards the intended subjects.

The precision-machined 316 stainless-steel weights each reduce buoyancy by 6.6 oz. (187g). You can use them with any positively buoyant underwater camera set to improve handling and control. Each weight has standard 1/4-20 male and female tripod threads that attach to all SeaLife cameras, housings and Flex-Connect Trays, and other housings and trays with 1/4-20 threaded mounts. The weights can be mounted side-by-side or stacked.

For example, the SeaLife SportDiver® Ultra with iPhone 14 Pro Max and 6"/15cm Dome Lens is positively buoyant by 6.3 oz (178g). Using one buoyancy weight makes it almost neutrally buoyant. Includes 2 weights in a package.



Flex-Connect® Ultra Dual Tray

Item SL9908

The new bow-shaped dual tray provides an ideal fit for the SeaLife SportDiver®, SportDiver® Ultra and other wide underwater camera housings. Mount two lights to your underwater camera to increase brightness and beam angle. Optionally, you can add flex arms (SL9901) to further spread light to where it's desired and to reduce backscatter.

The Ultra Tray can be oriented with grips and lights behind the housing or in front of the housing. Holding the camera with two grips increases stability and helps create well composed stills and steady videos. Rugged polycarbonate construction for reliable holding strength and stiffness. Mounts to any camera using a standard 1/4-20 tripod screw. Two 1/4-20 female tripod threads are located under the tray for adding a lens dock or other accessories.



Flex Arm

Item SL9901

Expand your camera set with one "click." Flex Arms feature 100° of bending motion, add 7 inches in length and allow you to direct light wherever you need it. Add up to two arms per side.



Grip

Item SL9905P

The rubber-armored grip provides comfortable and improved handling for your light, flash, or underwater camera set. It "clicks" directly into any Flex-Connect® Tray and accepts all Sea Dragon® Light and Flash heads.



Cold Shoe Mount

Item SL991

Use the Flex-Connect Cold Shoe Mount to mount a light, flash or action camera directly to the cold shoe of your camera.



Handle

Item SL998

Use a powerful Sea Dragon® Light as a handheld dive light by connecting it to the ergonomic Flex-Connect® Handle. The base features stainless 1/4-20 threads to attach a D-ring for a lanyard, or mount a camera.



8"/20cm Rigid Ball Arm

Item SL9909

Rigid, 8"/20cm anodized aluminum 1" ball arm. Fits to 1" ball clamps for a rigid mounting solution. Use with SL9907 clamp and SL995, SL999 ball joints.



YS Adapter

Item SL994

Connect any underwater light or flash that uses a YS Mount to Flex-Connect® accessories including grips, trays, Flex Arms, and Cold Shoe Mount.



Dual Tray

Item SL9904

Single Tray

Item SL9903P

Micro Tray

Item SL9902

The compact Micro Tray is perfect for adding light and stability to your ultra-compact camera, while the Dual Tray expands your camera set with multiple lighting options. A sturdy stainless 1/4-20 mounting bolt holds your camera in place on the trays' rubber pad.





6"/15cm Wide Angle Dome Lens for SportDiver® Item SL053

The 6"/15cm Wide Angle Dome Lens for the SeaLife SportDiver® underwater smartphone housing increases the phone's camera lens field-of-view by 40% and allows photographers to get closer to the subject while fitting everything into the image frame.

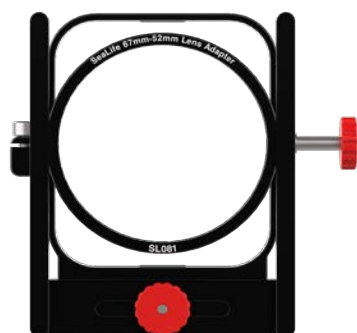
The new 6" dome lens easily mounts directly to the SportDiver® housing's lens port without a lens adapter and is ready to use. Split shots that divide the topside view with the undersea view are especially easy.

The lens design uses high-grade acrylic optics arranged in a 2-element/2- group array that delivers crisp edge-to-edge sharpness. Includes a rotatable sunshade built around the optics, protective cover, storage pouch, retaining lanyard & cleaning cloth.



SportDiver® Lens Adapter Item SL081

The SportDiver® Lens Adapter, for 67mm and 52mm threaded lenses can be mounted to the SportDiver® Smartphone housing allowing the underwater photographer to expand their macro and wide-angle creativity by allowing most aftermarket lenses to be used with the SportDiver® Smartphone housing.



The precision lens adapter, constructed with hard anodized machined aluminum and stainless-steel hardware, mounts directly to the SportDiver's lens port for a secure, solid fit. The adapter allows for easy horizontal and vertical lens movement adjustments to center the lens over the phone's intended shooting lens.

The adapter comes threaded with a 67mm opening for larger diameter lenses, and a 52mm threaded ring is included for attaching smaller 52 mm lenses.

52mm Wide Angle Dome Lens for SportDiver® Item SL054

The SportDiver® Wide Angle Dome Lens for the SportDiver attaches to the Smartphone housing with its 52mm thread mount to the SportDiver® SL081 Lens Adapter. The lens also mounts to other underwater cameras and housings using a 52mm thread mount.

The lens increases the phone or camera's field-of view by 43% allowing photographers to get two times closer to the subject. The SportDiver® 52mm Wide Angle Dome Lens design uses high-grade optics arranged in a 4- element/4- group array that delivers crisp edge-to-edge sharpness.

The internal elements are fully multi-coated optical glass. Includes rotatable sun-shade, front & rear lens covers, storage pouch, retaining lanyard & cleaning cloth.



SeaLife Camera lenses expand your underwater perspectives

Super Macro Lens for Micro Series & RM-4K Item SL571



The Super Macro Lens captures the intricate details of your photo and video subjects from 3.5" to 7" (9cm to 18cm). Features 2-element optical glass wet lens with anti-reflective coating and anodized aluminum construction with rubber press-on lens mount. Includes two removable focus distance sticks, safety lanyard and protective pouch. Fits all SeaLife® Micro-series and ReefMaster RM-4K camera models.

Close Up Lens for Micro Series & RM-4K Item SL572



This +10 Diopter Close Up Lens cuts the close focus range to less than half (approximately 6"-24" or 15cm to 60cm). Features a single element optical grade wet lens with anti-reflective coating and anodized aluminum construction surrounded by a durable rubber press-on lens mount. Includes safety lanyard and protective pouch. Fits all SeaLife® Micro-series and ReefMaster RM-4K camera models.

Micro Wide Angle Dome Lens Item SL052



The SeaLife Micro-series Wide Angle Lens increases the camera's field of view by 43% and allows for 3x closer shooting distance. For the SeaLife Micro 3.0, the lens angle is increased from 100° to 143° and shooting distance is reduced from 15"/38cm to 5"/13cm. The 0.7x dome lens high-grade optical design improves overall image quality and edge sharpness. Fits all SeaLife® Micro-series and ReefMaster RM-4K camera models.

Lens Caddy for Micro, ReefMaster & DC-Series Lenses Item SL091



The SeaLife® Lens Caddy mounts SeaLife DC, Micro and RM-4K series lens to a camera or tray using the standard 1/4"-20 tripod screw or to any grip/arm up to 1.8" (45mm) in diameter using a sturdy hook & loop nylon strap. The Lens Caddy holds any DC series lens, Micro series, and ReefMaster RM-4K series lenses.





AquaPod Mini

Item SL912

The SeaLife AquaPod Mini allows you to shoot pictures and videos from creative viewing angles, take self-portraits, and capture close up photos and videos of your subject while maintaining your distance. The AquaPod Mini's corrosion-proof design assures years of use in a saltwater environment. The AquaPod Mini (extends from 15.5in to 38in / 39.3cm - 97cm) fits all cameras with the included 1/4-20 standard tripod mount and adapter for GoPro® cameras.



Essential Gear for your adventure

SportDiver® Color Filters

Item SL40007 (Red), Item SL40005 (Yellow), Item SL40003 (Magenta)

Removable underwater color-correction filter for the SportDiver® that restores natural underwater colors. The Red and Yellow filters are designed for blue water conditions when not using an external light, or when using with a Fluoro light. Magenta Color-Correction Filter for green water color conditions. The filter also serves as a protective cover for the SportDiver's optical glass port.



Sea Dragon® Red Fire Filter

Item SL9832

Aids in underwater navigation in darkness so to keep the eyes aware and dilated, this feature also prevents frightening nocturnal sea creatures. Presses on/off underwater and works with all Sea Dragon Lights with 1200 or more lumens (Not for imaging or Sea Dragon 4500/5000).



SeaLife® Gear Retractor

Item SL925, Item SL926

Two sizes for compact cameras & compact lights; and large size for larger cameras, housings and lights. The retractors offer a quick-release clip feature that lets you quickly remove the attached device.

SL925: 32" (81cm) with 9oz. (255g) retraction force. 60lb. (27.2kg) breaking strength.

SL926: 42" (107cm) with 12oz. (340g) retraction force. 80lb. (36kg) breaking strength.



Universal Float Strap

Item SL920

Floats all SeaLife cameras and most other waterproof cameras and portable devices. Soft, comfortable closed-cell neoprene with orange liner for high visibility. Sliding lock securely adjusts strap to wrist. Integrated clip for attaching to BCD D-ring.



Screen Shield™ Screen Protector

Items SL3506(2"), SL5012 (2.4"), SL7402 (3"), SL4056 (7.1")

Waterproof screen protector for the Micro 3.0 (SL5012), RM-4K (SL3506), SportDiver® Ultra Housing (SL4056). The nano-coating repels water and keeps the screen free of fingerprints while protecting against scratches.



Moisture Muncher™

Item SL911

Moisture Muncher™ capsules fit inside SeaLife underwater camera and smartphone housings and absorb remaining internal moisture. Each tube absorbs its own weight in moisture; when the crystals turn from blue to pink, full absorption has been reached. Each package contains ten (10) 1.5g capsules containing color indicating silica gel.



SeaLife® Hand & Arm Strap for Dive Lights

Item SL9834

The SeaLife® Hand and Arm Strap for Dive lights is a stable hand or forearm attached design that creates a steady beam of light while keeping your hands free. The light mounts to a secure, slip-proof mounting surface that firmly holds light in place with a hook and loop fastening system. Compatible with Sea Dragon® Mini 900, 1000, 1300, and any lights with up to 1.75" (4.4cm) grip diameter.



50Wh Battery for Sea Dragon® 4500F, 5000F, and 5000+ Lights

Item SL67510

Rechargeable lithium ion battery (3400mAh, 7.4V 50Wh) for Sea Dragon® 4500F, 5000F, and 5000+ Lumen Lights.



25Wh Battery for Sea Dragon® 1200-3000 Lights

Item SL9831

Rechargeable lithium ion battery (3400mAh, 7.4V 25Wh) for Sea Dragon® 1200, 1500, 2000, 2100, 2300, 2500, 3000, Pro Dual Beam Photo/Video Lights, and Fluoro-Dual Beam. Includes protective cap.



18650 3500 mAh Lithium Ion Battery

Item SL9828

XTAR 18650 3.6V 3500mAh Li-Ion rechargeable battery for Sea Dragon® Mini 1300S, 1000F, 900S, 650S/F, Fluoro, and other brands adds approximately 30% additional run time over 2600mAh 18650 cell.



18650 USB Mini Charger

Item SL9825

Charges 18650 and other Li-ion batteries. Connects to any 5V USB wall charger. Displays charging status and current. Ultra-compact design for easy travel. Includes USB cable and storage pouch. Battery not included.



SeaLife® Photo Pro Backpack

Item SL940

The active diver requires more than just a gear bag for camera gear: You need a pack that travels well, is compact enough to fit into the overhead bin or under the seat in small island hopping commuter aircraft, and offer all the storage solutions for your photo gear. The SeaLife Photo Pro Backpack features a waterproof interior, to keep surrounding compartments dry and to keep moisture out.

The interchangeable, multi-compartment interior design fits photo gear up to a full-sized camera and housing with several lights or strobes, such as the **Micro 3.0 Pro 5000 Duo Set**, plus one or two lenses, batteries, and all charging accessories. There's a separate compartment for a tablet or small notebook PC, and deep side pockets to accommodate a monopod or tripod.



Sea Dragon® Custom EVA Case

Item SL942

Thermo-molded EVA case for your camera, light, and other accessories. Protective, yet compact. Designed to hold your essential gear and easily fit into your luggage or carry-on bag.





The internal compartments create secure, cushioned homes for your camera equipment. Easily movable dividers allow you to create the perfect compartments to hold your gear.





SeaLife®

Pioneer Research 97 Foster Road, Suite 5 Moorestown, NJ 08057 USA 856.866.9191 info@sealife-cameras.com
sealife-cameras.com  SeaLifeCameras  SeaLifeCameras

Product Features and Specifications may change without notice. © 2024 Pioneer Research, Item SL816