



**Sea Dragon 5000
Pro Photo/ Video Light
(Item SL676)**

Overview: The Sea Dragon Pro Photo/Video light delivers 5000 true lumens in a smooth, even 120° wide beam without hotspots. Unmatched 96 CRI (color rendering index) and 97 TLCI (Television Lighting Consistency Index) COB LED array that mimics natural sunlight. Two integrated red LED's "stealth mode" emits an 88° wide beam that won't scare away nighttime sea creatures and preserves your eye's natural night vision. Brightness is adjusted manually in 4 steps (100% 75%, 50% and 25%) or automatically (from 10% to 100%) with its built-in photocell light sensor. The flash-detect feature turns off the light for 1 sec. when nearby flash is fired. The light easily mounts to YS, 1" ball joint or Flex-Connect system of arms, grips, trays and mounts. The 50Wh battery delivers 50 minute run time at full power and 4hrs at 25% brightness.

START

What's in the box:



Sea Dragon 5000 light head with YS adapter attached



Flex-Connect YS adapter



1" ball joint adapter with w/ hex key



50W Li-ion battery with protective cover, charging tray and AC power adapter



Int'l plug adapters for EU, UK and AU



Carry Case



Spare O-rings w/ lube and removal tool

1

Charge the battery.

Place battery in charging tray. The charging status indicator is located on AC power adapter and will turn green when fully charged. Note: Battery is pre-installed in the light. Remove yellow contact cover, which prevents accidental power on.



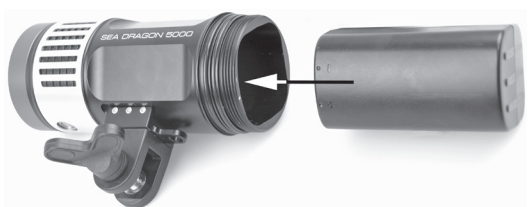
2

Check if O-rings are lubed. The O-ring is pre-lubed by the factory. Before each dive, check to make sure O-ring appears shiny. If not, apply small amount of silicon lube to outer surface of O-rings. Wipe off excess lube.



3

Insert battery in light and screw on waterproof battery cap until fully sealed.



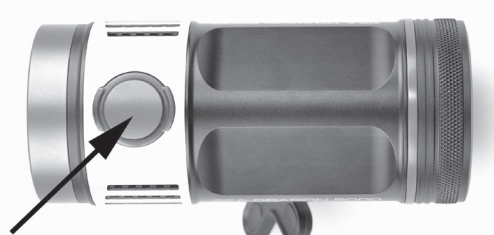
4

Connect light to arm or grip. Use Flex-Connect YS adapter if connecting light to Flex-Connect system of arms, grips and trays. Light may also be mounted directly to YS arms and grips. For mounting to ball joint arms/grips, replace the YS mount with Ball Joint Mount using the included hex key.



5

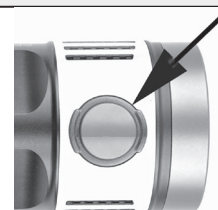
Push and hold power button for 1 second to power light on and 2 seconds to power off.



6

Push and release the power button to cycle through 6 different brightness modes:
100% → 75% → 50% → 25% → Auto → Red → 100%

7



The battery status indicator is located around the power button. It is green when battery charge is 100 - 51%, yellow for 50 - 21%, red for 20 - 5% and blinking red when less than 5% charge remains.

8



To activate emergency signal mode, push and hold power button for 4 seconds from power off state. Push and release power button to select between 1 sec blink interval and SOS Morse code.

9

The Auto Flash Detect (AFD) feature is already activated. The light will power off for 1 second when nearby flash is fired. To deactivate AFD, push and hold power button for 5 seconds from power off state until status indicator lights blink. Push and release power button to select between AFD off (1 blink per sec.) and AFD on (2 blinks). Push and hold the power button for 2 seconds to save the setting and power off the light.

IMPORTANT:

1. Avoid using the light above water for more than a few minutes. The front of the light head becomes very hot within a few minutes, which may cause burning if touched. Water is needed to keep the light cool. A thermal sensor will dim the light if it overheats.
2. After use, soak sealed light in fresh water for 20 minutes to dissolve salt residue. Towel dry. Allow light to fully dry before storage.
3. If water has entered the battery compartment or under the lens port, immediately power off the light. On land, remove the battery. Allow battery compartment to fully dry. Contact your local SeaLife dealer or SeaLife service center in your country for repair service.
4. Do not use battery that has become wet or if outer casing is cracked or damaged. Dispose of wet or damaged battery in accordance with your local battery recycling regulations.
5. Remove battery from light before transporting, traveling or long term storage. Always use the included protective battery cover when battery is not inside the light or charging tray to prevent accidental short-circuiting the battery contacts.
6. Do not obstruct the safety pressure release valve located under the light head.
7. Observe all SCUBA dive safety rules and control your buoyancy at all times. Consult your dive instructor for dive safety questions.
8. Visit SeaLife-Cameras.com website for troubleshooting advice, updates to these instructions, spare parts and other helpful information.

GUARANTEE: SeaLife warrants the original purchaser of this product, for a period of one (1) year from the date of purchase, that the product is free from defects in workmanship and materials. In the event the original purchaser believes there is a defect in a product, it is recommended that the purchaser first visit www.sealife-cameras.com for product updates and information on how to get warranty repair service. Please contact your local SeaLife dealer or the importer in the country where the product was purchased for return information.

