

Pioneer Research

Sealife Technical Document

Date: June 17, 2003

Updating Your Firmware

Below are the instructions to updating the firmware of your camera. Before we continue you should have the following items:

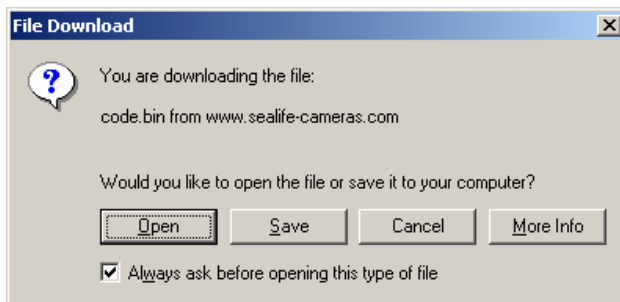
- Camera's serial number listed on the bottom of your camera.
- Compact Flash (CF) memory card.

Warning: Be sure your CF card does not contain important photos, as you will need to reformat the card at the end of the process. Before continuing please be sure you are able to connect your camera to your computer and it is working correctly.

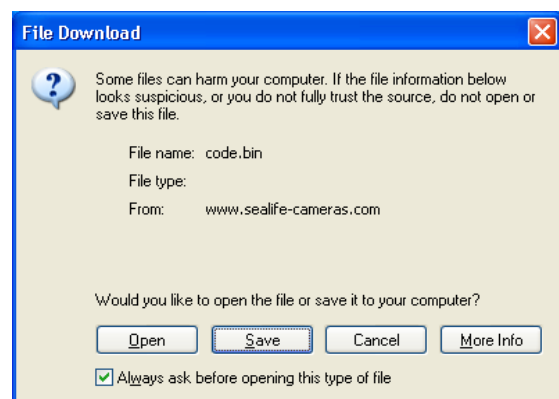
Steps for updating firmware:

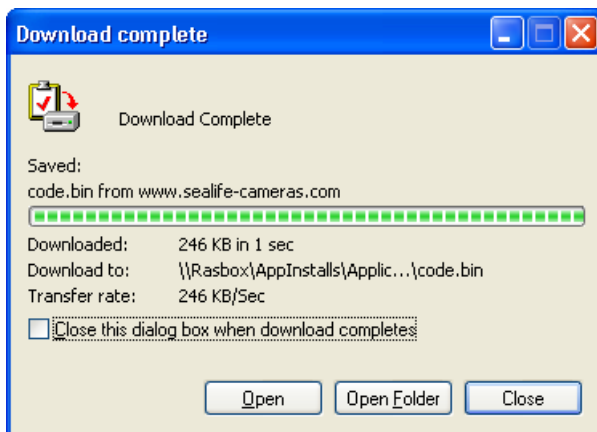
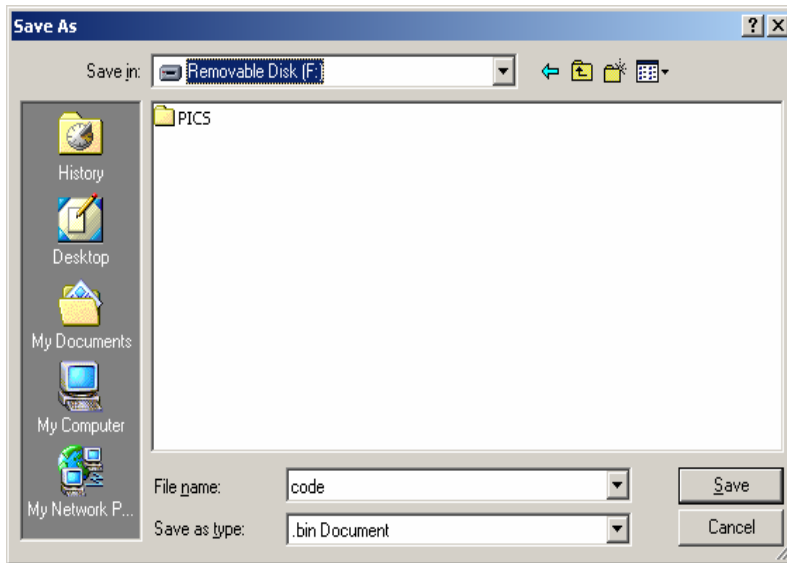
- Insert your CF card and turn the camera on in PC mode. (Models DC100/DC200)
- Connect the USB cable to the port in your PC.
- Power on the camera in PC mode.
- Connect the USB cable to the port on your SeaLife Digital Camera.
- Confirm that your camera has made a connection by checking to see if the "Removable Disk x" (X represents the drive letter automatically assigned by your computer) is displayed when clicking on "My computer"
- Select and click the appropriate firmware according to your camera's serial number. (See chart below)
- Choose the save option and save the firmware directly to your "Removable Disk x" drive. (X represents the drive letter automatically assigned by your computer)

Windows 2000 and before:



Windows XP





Once the download has completed:

- Close all open windows
- Using the “Unplug or Eject Hardware Utility” in the lower right corner (Icon tray)
Disconnect your camera and power it off



Applying The Update:

- With the CF card still inserted Power the camera back on, you will notice that only the lights on the back of the camera come on and will stay on for approximately 10 seconds.
- Once the green light in the back goes out remove the CF card
- Turn the camera on (with CF card removed)
- Go to the Land&Sea settings menu and insert the memory card into the camera with the camera power on.
- Go to format media and format the card. (this will reformat and erase the firmware from your card)
- Your camera should now be updated.
- If you have any questions please give us a call at 1-856-866-9192

Firmware Version Matrix

Camera Serial #	Version	Web Link
A	1.4	http://www.sealife-cameras.com/Firmware/Firmware14abcp/code.bin
C	1.4	http://www.sealife-cameras.com/Firmware/Firmware14abcp/code.bin
D	2.3	http://www.sealife-cameras.com/Firmware/Firmware23d/code.bin
E	2.3	http://www.sealife-cameras.com/Firmware/Firmware23d/code.bin
P	1.4	http://www.sealife-cameras.com/Firmware/Firmware14abcp/code.bin